

Serving the  
Envelope Manufacturers  
for 100 years  
1904 - 2004

Spring 2004 - Vol. 7, Number 3

# Newsletter



F.L. Smithe Machine Co. Inc.  
899 Old Route 220 North, P.O. Box 36, Duncansville, PA 16635



F.L. Smithe acquires

**AQUAFLEX™**

The F.L. Smithe Machine Company has acquired the assets of Aquaflex, a Montreal, QC based manufacturer of narrow web presses. Quality print has become a necessity in the envelope market and this acquisition will enable F.L. Smithe to offer enhanced print solutions to our envelope customers as well as converting solutions to the narrow web press market.

Aquaflex is a multinational manufacturer of roll to roll flexographic presses and converting systems. With a special focus on printer profitability, Aquaflex blends advanced technology and efficient work flow systems to create a balanced and stable platform for the packaging industry. Aquaflex manufactures printing and converting systems ranging from 10" to 26" wide for the tag & label, folding carton and flexible packaging markets. Aquaflex is well positioned with digital printing offerings as well.

*"This acquisition will enable F.L. Smithe to offer enhanced print solutions to our envelope customers..."*

Flexible Packaging is one of the strongest growth industries in the world. Printing needs in this industry require that machines print and convert material such as board, paper, film, and foil. Among other markets, Aquaflex serves the Food and Beverage market as well as the Medical and Pharmaceutical markets.



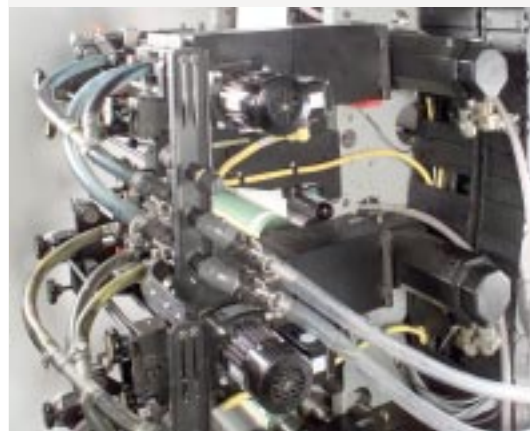
The printing presses offered by Aquaflex are well known for their quality print. They come in a variety of web widths and different printing types to meet the challenging needs in the packaging market. Many of the machines have eight or more flexographic print stations running inline with UV, gravure and screen printing capabilities. Rigid containers are being replaced with different materials and improved print. These applications require accurate web tension control, laminating inline, coatings and adhesives, gravure and UV expertise.

We're very excited to complete this transaction on the eve of our 100th anniversary. This allows F.L. Smithe to diversify into the Label and Flexible Packaging markets and offer enhancements to both markets. Aquaflex makes an excellent product that will complement our line nicely.

## SSP

### SERVO STACK PRESS

*THE LATEST DESIGN FOR  
FLEXOGRAPHIC PRINTING IS THE  
NEW CHAMPION MODEL SSP  
SERVO STACK PRESS*



The SSP uses independent servos for more precise color registration. With up to six colors, in multiple configurations, you can print anything from a simple corner card up to sophisticated four or five color graphics.

The SSP can be supplied with standard solid type cylinders, airshafts configured for sleeves or optional cantilevered air mandrels for sleeve-style printing.

All printers use doctor blade systems designed for high-speed operation.

The Champion model SSP can be interfaced to any of the following models of Champion machines: RO, RA/WA, SW and the new SR. The SSP is also available for other envelope folding machinery.

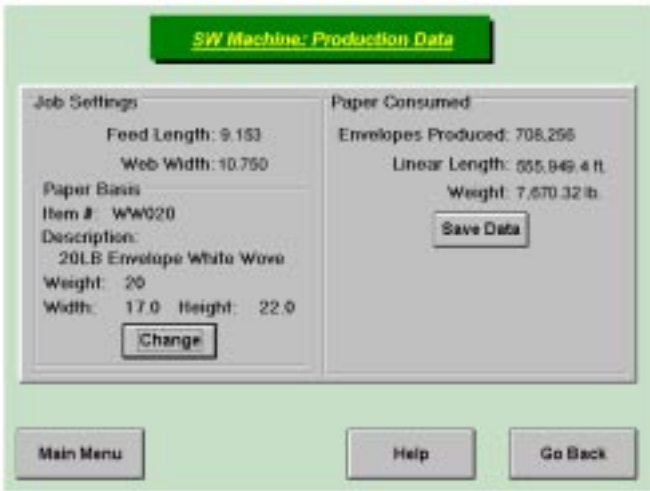
*Owners of the standard stack press can also update their existing stack press to the new Servo Stack Press.*

**AQUAFLEX™**

[www.aquaflex.com](http://www.aquaflex.com)

Gather Information & Know Your Processes Better

## SW Production Data Screen



This software upgrade is designed to provide data on paper consumed on the current job. The program calculates the total weight of envelopes delivered versus the total weight of paper used to calculate the total waste. The system uses data from the entered job information and information on the paper base weight selected from the customer defined Paper Definitions Table.

To order, please specify *SW Special Order File M-69*.

Ease Your Operator's Day

## Automatic Envelope Stop



The automatic envelope stop increases productivity through less operator fatigue by eliminating the need for the manual

envelope stop to be placed each time after removing envelopes from the delivery line. The Automatic Envelope Stop is easily installed in a minimal amount of time. The unit comes with two Plexiglas stops for smaller and larger envelopes. These two stops are easily exchanged. The Automatic Envelope Stop can be installed on any Champion SW, SR, and RA machines.

To order please specify *SW Special Order File M-70* for the SW or SR and *RA Special Order File No. 330* for the RA.

Enhance Your Product

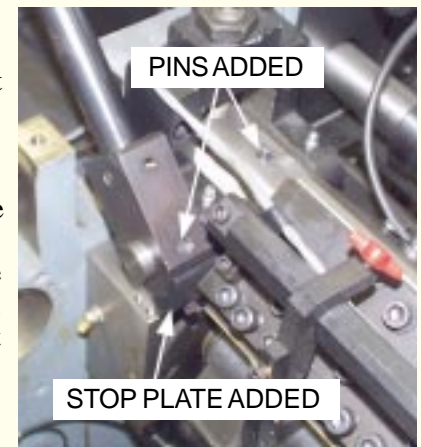
## Web Straight Line Web Grooving

The web-grooving unit embosses the web of paper to create grooves that enhance the appearance, feel and value of the finished product. This file can be quickly installed on any RA/WA, RO, SW or SRW in the field. It is simple to operate and easy to disengage when not in use.

To order, please specify *WA Special Order File #539* and *Instruction #69GO* for the WA or *SW Special Order File #M-5* for the SR and SRW.

## WA, RO AND MOW Cut-off Bridge Counterweight Modification

In our previous Fall 2001 Newsletter F.L. Smithe highly recommended that all WA, RO and MOW cut-off bridge units be modified to improve the safety of the bridge in the upright position. The modification includes the replacement of the dowel pins in the counterweight support bracket and the bridge pivot shaft with new pins.



WA COUNTERWEIGHT MODIFICATION SHOWN

For additional protection, a counterweight stop plate is mounted to the counterweight support bracket on the WA and MOW units. On the RO a counterweight stop clamp is used.

Please verify that these modifications have been done to your WA RO and MOW cut-off knife units.

***These counterweight modifications are being supplied at no charge to the customer.***

- For the WA: Please specify *WA-Special Order File 616* and *Instruction #69IV*. This modification is standard on WA Serial No. 5240, 5249, 5251 and up.
- For the RO: Please specify *RO Special Order File M90* and *Instruction #77CK*. This modification is standard on RO machines after Serial No. 5239.
- For the MOW: Please specify *MOW Special Order File 235* and *Instruction #42EF*. This modification is standard on all MOW machines after Serial No. 4758.

***Please Remember to include the Serial Number of the machine when you order this modification.***

# SAFETY UPDATES

## RA Seal Fold Trap Adjustment Knob Extension

This safety feature is **highly recommended** by the F.L. Smithe Machine Co. for all envelope factories with RA Machines. This modification extends the seal flap trap height adjustment through the folder guard making it possible to adjust the seal fold trap height without lifting the guard. The height adjustment extension is standard on all RA machines Serial No. 5481-up.

To order, please specify **RA Special Order File #319** and **Instruction #69IZ**.



## RA HSP Gummer Remote Adjustment

The RA High Speed Patcher Remote Adjustment allows the operator easier access to the high speed patcher gummer phasing. The gummer phasing knob and bracket is relocated to a more accessible location over the primary patcher. A flex shaft connects the knob to the original gummer phase adjuster. This installation is recommended when also installing the Patcher Safety Guard. This adjustment is standard on RA machines 5481-up.

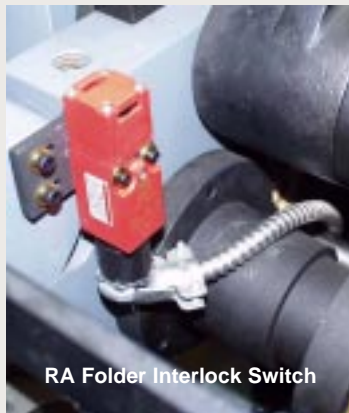
To order, please specify **RA Special Order File #326** and **Instruction #69JB**.



## RA Folder Interlock Switch

Additional protection is available for your RA operator with the installation of an interlock switch on the RA Folder Hood. This switch will shut down the machine if this hood is lifted while the machine is running. This interlock is standard on RA machines Serial No. 5481-up, except No. 5484.

To order, please specify **RA Special Order File #325** and **Instruction #69JA**.



## RA Motor Conversions

### Single Motor Drive Conversion

#### RA-SOF-328

- Converts the older style dual motor drive to a single AC motor drive.
- Higher energy efficiency.
- Lower motor maintenance (no brushes).
- Better speed control.
- No longer a need to synchronize the motors during operation.
- Machines can now be operated at low speeds without damaging the motor.
- Manufacturers are no longer making the wound rotor motors for replacement.

### Enhanced Single Motor Drive Conversion

#### RA-SOF-329

- All of RA-SOF-328 plus the following;
- All new electrical wiring for the machine.
- Touch screen interface for easier operation of the machine.
- Jam logic system, for quicker response and less waste due to jams.
- Two-handed jog system.

## RA Vacuum Transfer Table (After Panel Cutter)

### Now available for all RA 600 and RA 800 Series Machines

This file is now available for both 600 and 800 series RA machines. The file replaces the older style rollers with the new vacuum transfer table. The vacuum table provides for a more positive transfer of blanks through this area by keeping the blanks flat against the table. Order **RA SOF #154**.

Machines must have the 10" cylinder after the PC to install this file. If your machine does not have the 10" cylinder after the PC order **RA SOF #71** for 800 series machines or **RA SOF #71A** for 600 series machines.

*The serial number for your RA is a must when ordering this file.*

## HINTS and TIPS

There is an untapped wealth of knowledge and information about the operation of our machinery kept by adjusters and operators in the industry. We would like to give them the chance to share that information with other adjusters and operators. If you have a tip or suggestion that will enhance the operation of any F.L. Smithe Champion machine, RA, RO, MO, SW, etc., please let us know and we will publish your HINTS & TIPS in future newsletters. Just send them to:



### “Newsletters”

F.L. Smithe Machine Company  
PO Box 36  
Duncansville, PA 16635

## RA STANDARD PATCHER

*F.L. Smithe has a group of RA Standard Patchers in stock for immediate delivery.*

The Standard Patcher is a valuable tool for direct mail envelopes, producing patches as large as 9" X 12". An F.L. Smithe Technician can install this file on your machine in approximately three days.

To order, please specify *RA Special Order File #135* and *Instruction #69JA*.

A member of  
Envelope  
Manufacturers  
Association



*Serving the Envelope Industry since 1904*



## AMC Web Shaft Bumper Guards

Acting on a suggestion from one of our customers, F.L. Smithe has designed a urethane bumper for the AMC unwind shafts. The bumper is made of urethane with a specific hardness that allow rolls to be loaded easier onto the unwind shafts without damaging the cores. This part will fit all AMC machines unwind shafts. Order one **AMC-10216** for each unwind shaft.

## BOOKS, CDS AND DVDS

**RA Owner's Guide** – This booklet covers all Champion RA machines by serial number. By looking for the next highest serial number in the book you can easily see what can be done to your RA machines to enhance their operation and performance. Each enhancement has a brief description and a Special Order File number enabling you to update and/or upgrade your Champion RA.

**RA Remanufacturing Program CD** – This CD is a PowerPoint® presentation which gives you an overview of the new program. Included are before and after photographs of a RA machine remanufactured by F.L. Smithe. You will view RA serial #4 (over 30 years old) as it is remanufactured to the latest RA 800 series design and beyond!

**SRW DVD** – This DVD is an overview of the new Champion SRW computer controlled, servo driven web machine. You will view the SRW in operation and see highlights of the new Servo-Stack Printing Press.

**Call F.L. Smithe Sales for your free copy**

## Machine Serial Numbers



Please remember to always include the serial number of your machine when ordering parts and/or special order files. This enables us to keep our records up-to-date concerning your machinery and helps to avoid ordering the wrong part or file for your machine.

## F.L. SMITHE MACHINE CO., INC.

899 Old Route 220 North, P.O. Box 36, Duncansville, PA 16635

Main Office: 814-695-5521

Parts Dept.: 814-695-4838

Main Office Fax: 814-695-0860

Parts Fax: 814-696-3676

Service Email: [service@flsmithe.com](mailto:service@flsmithe.com)

Parts Email: [parts@flsmithe.com](mailto:parts@flsmithe.com)

The F.L. Smithe Machine Company, Inc. reserves the right to alter information or specifications within this Newsletter without notice. No portion of this Newsletter may be reproduced without the written consent of the F.L. Smithe Machine Company, Inc. © COPYRIGHT 2004 BY THE F.L. SMITHE MACHINE COMPANY, INC. Printed in the U.S.A.